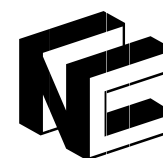


香港荃灣橫龍街32-40號興盛工業大廈12字樓D室  
Room D, 12/F., Houston Ind. Bldg., No. 32-40 Wang Lung St., Tsuen Wan, H.k.  
Tel: (852) 3118 7916 Fax: (852) 3118 7917  
E-mail: [nc@hknewcentury.com](mailto:nc@hknewcentury.com)  
Website: [www.hknewcentury.com](http://www.hknewcentury.com)

2020



**NEW CENTURY**  
**SUPPLIES & ENGINEERING LTD.**

**Anti-Fatigue:**

Matting that alleviates foot pressure, stimulates blood circulation and helps reduce stress on the neck, legs, and lower back.

**Fire Retardant:**

Matting designed to resist the spread of fire and withstand heat, tested and certified by independent laboratories.

**Medium Traffic:**

Recommended for use in medium traffic entranceways.

**Anti-Slip:**

Matting designed to provide added traction through aggressive surface patterns and textures.

**Floor Protection:**

Absorbs impact, reduces breakage and protects floors.

**Modular System:**

Interlocking mats allow for easy on-site customization and configurations

**Anti-Static:**

Formulated to absorb static electricity.

**Food Processing:**

Matting suitable for use in food processing plants/areas where exposure to animal fats, greases, and oils are common.

**Non-Conductive:**

Formulated to provide insulation for the worker, it keeps the worker from being "grounded", thereby preventing electric shock.

**Cleaning:**

Suitable for cleaning with high pressure(hot)power-washer.

**Food Service:**

Matting suitable for use in kitchens, bars and other food service areas.

**Oil/Grease Resistant:**

Matting suitable for contact with oils, greases, and animal fats.

**Cold Resistant:**

Material formulated to withstand freezing temperatures.

**Heavy Traffic:**

Recommended for use in heavy traffic entranceways.

**Outdoor Use:**

Heavy-duty construction designed to act as a first line of defense against tracked-in dirt by scraping soil and moisture from shoes.

**Custom:**

Mats available in custom sizes and/or lengths.

**Insulation:**

Protects against cold floors, vibrations and noise.

**Welding:**

Matting designed to withstand exposure to sparks in areas where welding takes place.

**Drainage:**

Open construction matting allows for liquids and debris to pass through, providing secure footing in wet environments.

**Light Traffic:**

Recommended for use in light traffic entranceways.

# Ground Safety and Pollution Control

## 地面安全與污染控制篇





Special fibers ensuring superior water oil and grease absorption properties.Special backing anti-slip and safety.The best choice for indoor entrance area and wet and oily area.

Features

Special fibres, ensuring superior water oil and greaseabsorption properties  
Especially suitable for indoor in wet weather restrooms, kitchens and other wet or greasy areas, due to the excellentmoisture-control  
Special textured Backing, soft, anti-slip and safety  
Withstanding heat and cold tensile, wearable, due to the special Backing  
The colour fastness is significantly improved improving themats' appearance retention  
The open tufting construction allowing easy dirt release formaintenance ,Can repeated washing

Suitable Area

Available for indoor hallway,restroom kitchen and other oil and wet aeras.

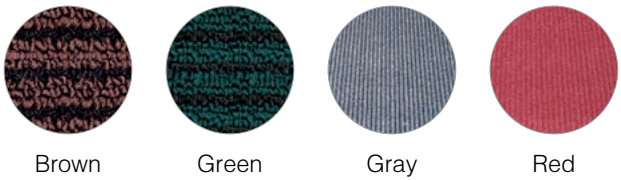
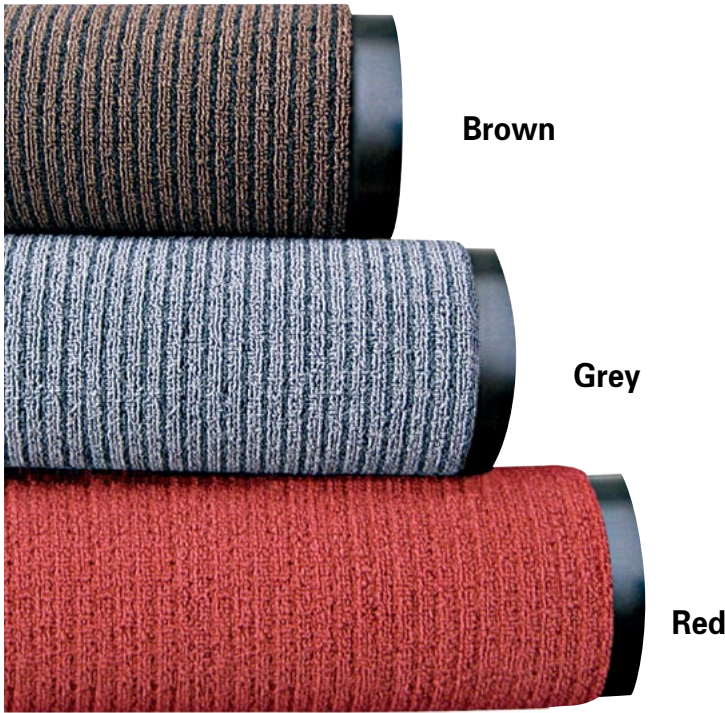


Technical specifications

Type	Type B
material	micro fibers
backing	PVC
width	2m
roll length	18m
total weight	4200g/m <sup>2</sup>
pile weight	680g/m <sup>2</sup>
pile height	7mm
total height	9mm
Flamability	GB8624-2012:B,

Cleaning

Daily Cleaning: Daily with upright vacuum cleaner witha brush cleaning  
Deep Cleaning Monthly use carpet pumping washingmachine with low foam carpet cleaning agents.  
Also can use water gun with low foam carpet cleaner to clean,and finally repeatedly washed with water after dry watersuction machine, (depending on traffic situation,accelerate or reduce frequency).



AE-4000 HERITAGE RIB



Heritage Rib® offers a heavier-weight double rib high/low designthat performs the scraping function of the mat. This medium toheavy traffic entrance mat is intended for areas that need extramoisture retention and scraping action and has 33% more carpetthan many competitors' "best" rib mats.



Product info:

- Heavier-weight double rib high/low design
- 24 ounces of needle-punched yarn per square yard
- Low profile to perform in narrow clearance doorways
- Vinyl backing helps reduce mat movement
- Recommended product as a part of the GreenTRAX™ program for"Green Cleaning" environments

**\*Note:** Ribs run length of mat

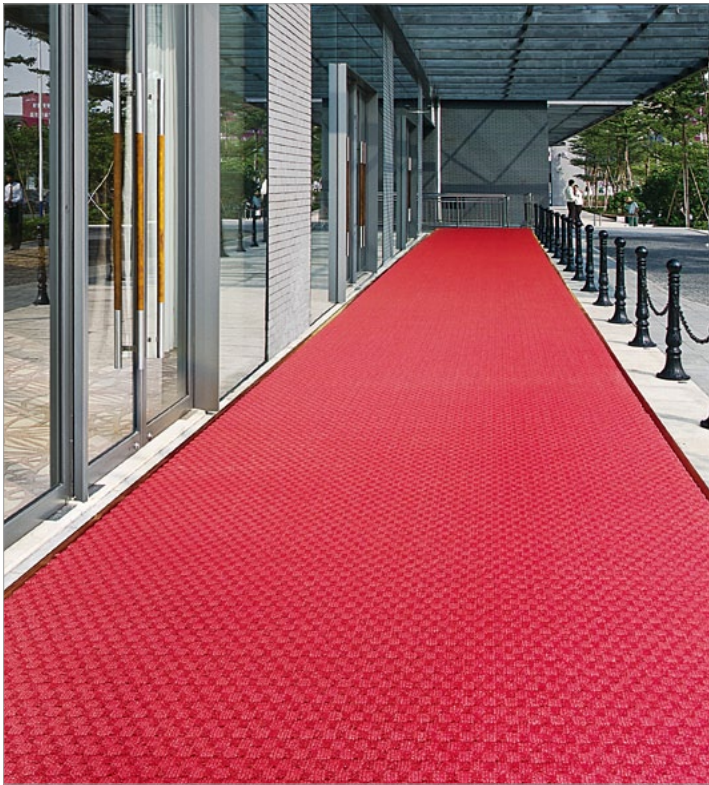
**Thickness:** 8mm  
**Face Weight:** 24 oz per sq.yd.  
**Stock Sizes:** 2' x 3', 3' x 4', 3' x 5', 3' x 6', 3' x 10', 4' x 6', 4' x 8'  
**Roll Sizes:** 3' x 60', 4 x 60', 6 x 60'  
**Custom Sizes:** Available in 3', 4' and 6' widths (up to 60')



**APPLICATIONS:**  
Indoor-Entranceways; Lobbies; medium traffic areas.







**APPLICATIONS:**  
Inside foyer area–Main entranceways, medium to heavy traffic areas.

**AE-750 PREFERENCE (SUPERIOR)**



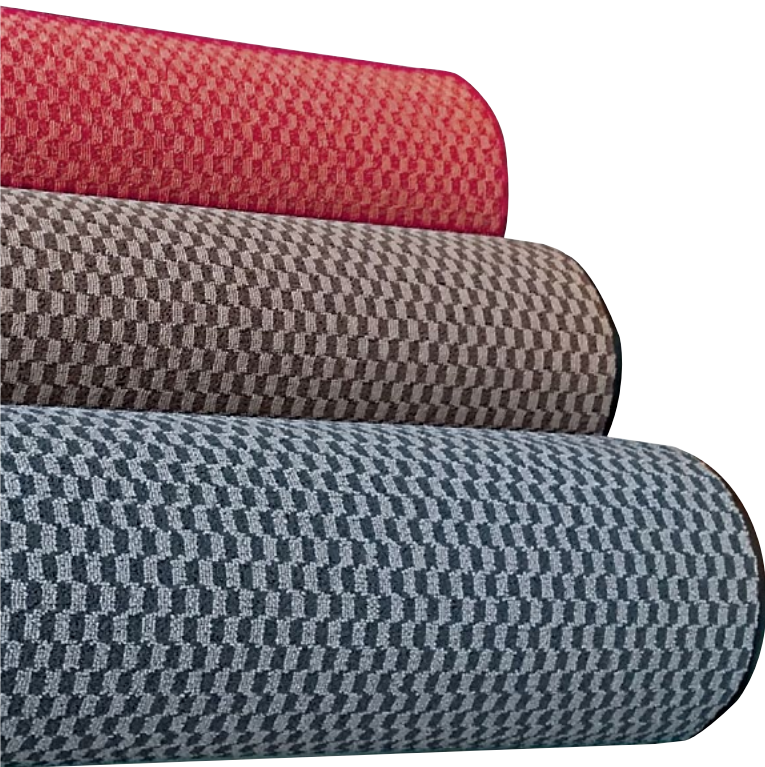
Preference® has a dual fiber surface of scraping and looped pile drying yarns in a mini checked pattern to absorb moisture and scrape dirt and debris from foot traffic. Color combinations blend light and dark colors to help camouflage debris while maintaining its contemporary appearance.



**Product info:**

- A combination of scraping and looped pile Decalon® drying yarns in a mini-checked pattern
- Vinyl backing in corresponding colors helps reduce mat movement
- Dual-fiber, mini-checked pattern traps, holds, and camouflages moisture and debris

**Thickness:** 3/8"  
**Stock Sizes:** 2' x 3', 3' x 4', 3' x 5', 3' x 6', 3' x 10', 4' x 6', 4' x 8'  
**Roll Sizes:** 4 x 60', 6 x 60'



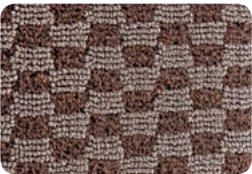
Red



Grey



Green



Brown



Blue



**APPLICATIONS:**  
Indoor–Main entranceways;  
Medium traffic areas.

**AE-850 ESTES**



Estes is made with a densely tufted cut-pile Decalon® construction that is a step above the look-alikes and provides much greater moisture retention. 24 ounces of tufted yarn per square yard make it the perfect product for all medium traffic areas. A vinyl non-slip backing helps to minimize mat movement.



**Product info:**

- Densely tufted cut-pile Decalon® construction
- 24 ounces of tufted yarn per square yard
- Vinyl backing helps reduce mat movement

**Thickness:** 3/8"  
**Face Weight:** 24 oz per sq.yd.  
**Stock Sizes:** 2' x 3', 3' x 4', 3' x 5', 3' x 6', 3' x 10', 4' x 6', 4' x 8'  
**Roll Sizes:** 4 x 60', 6 x 60'





### AE-PP1(BEST)



AE-PP1 is made with a densely tufted cut-pile Decalon® construction that is a step above the look-alikes and provides much greater moisture retention. 24 ounces of tufted yarn per square yard make it the perfect product for all medium traffic areas. A vinyl non-slip backing helps to minimize mat movement.

#### Product info:

- Densely tufted cut-pile Decalon® construction
- 24 ounces of tufted yarn per square yard
- 3/8 inch overall thickness for use in narrow clearance doorways
- Vinyl backing helps reduce mat movement

**Thickness:** 7mm

**Roll Sizes:** 4' x 60', 6' x 60'

**Custom Sizes:** Available in 4', and 6' widths (up to 60')



### AE-1000 TRIPLE RIB



Triple Rib offers a heavier-weight double rib high/low design that performs the scraping function of the mat. This medium to heavy traffic entrance mat is intended for areas that need extra moisture retention and scraping action and has 33% more carpet than many competitors' "best" rib mats

#### Product info:

- Heavier-weight double rib high/low design
- 24 ounces of needle-punched yarn square yard
- Low profile to perform in narrow clearance doorways
- Vinyl backing helps reduce mat movement

**Thickness:** 9mm

**Roll Sizes:** 4' x 60', 6' x 60'

**Custom Sizes:** Available in 4', and 6' widths (up to 60')





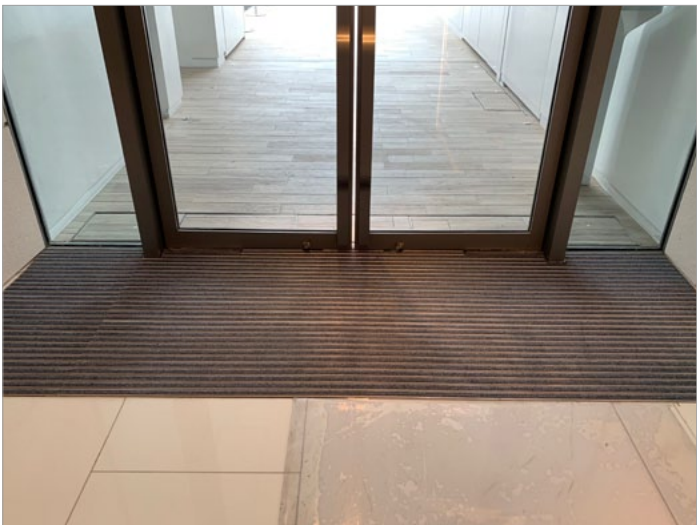
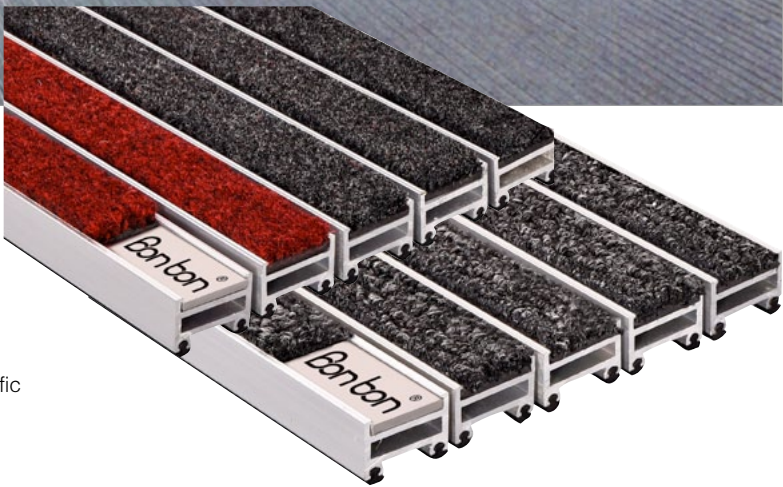
Durable and Stylish  
Safe, Effective and Attractive



Aluminium Frame with fiber carpet matting, ultimate performance, outstanding look.

Recess Well Matting provides highly efficient matting for the central point of the entrance in shopping centres, airports, banks and other commercial buildings.

- Matting delivers all advantages in one:
- Resists extremely well to traffic, including trolley, cart and forklift traffic
  - Traps perfectly fine and coarse dirt
  - Absorbs incoming water
  - Keeps a superior appearance under any conditions



Avoid slip hazards ( Rubber Treadstrip )

Walked-in dirt and moisture can cause slip hazards in entrances with hard floors.

The Thermoplastic Rubber safety tread strip guarantees safe passage. The safety tread strip is elastic and encapsulates the sole of the shoe.

The rough surface gives optimum grip; the resistance to wear provides a prolonged life cycle.



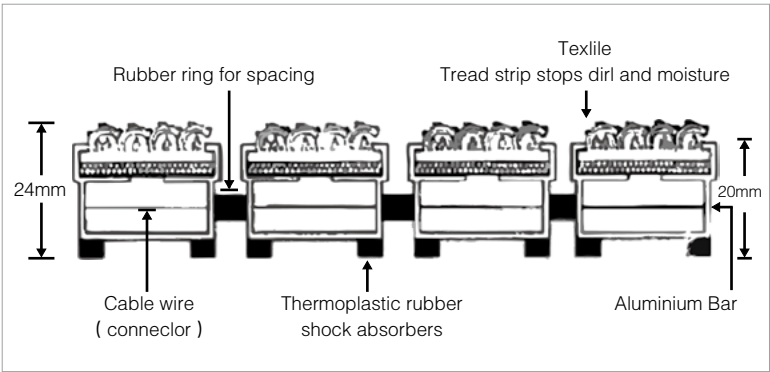
The dirt will fall through the ribs inside the matwell  
The dirt is kept from sight and gives the entrance a cared-for impression  
The mat can be rolled up for cleaning

Prevents walked-in moisture

Moisture is the hidden soiler of floorcoverings beyond. On hard flooring, moisture can cause a serious and undersired slip hazard.

Polyamide BCF yarn textile tread strip (with coarse filament) stops moisture. Friction with the exclusively developed Noval Resist yarn results in removal and storage of moisture from soles of shoes.

The exclusive brushing and scraping yarns not only is it very effective at brushing off dirt and have a high moisture absorbing capacity, but it also releases the dirt much easier when cleaned. For colour selection, please contact your local distributor.



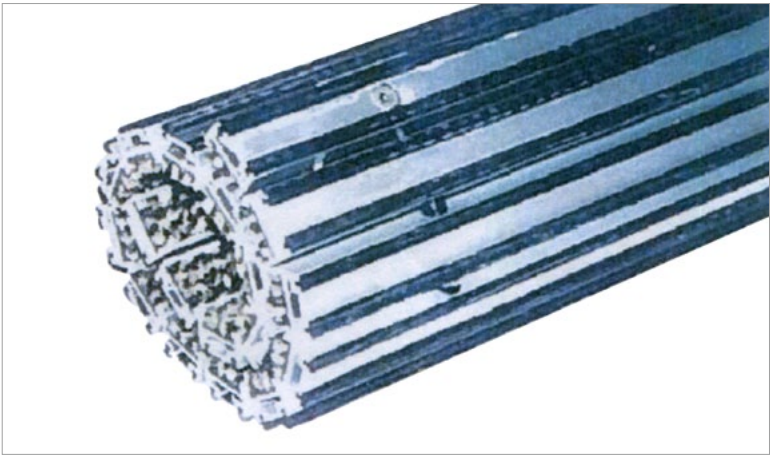
Property	Value
Total mat depth	22mm
Aluminium profile height	17mm
Aluminium wall thickness	1.8mm
Profile width	27mm
Space between 2 profiles	3mm

Prevents walked-in moisture

Coarse dirt increases the wear of floorcoverings beyond. Furthermore, soiling becomes noticeable more quickly because of the coarseness of dirt.

The unique construction guarantees a strong brush action, which removes sand, mud, clay and grit from the sole of the shoe.

As the brushes are firmly set into the aluminum base, an optimum life cycle and effectiveness are ensured.



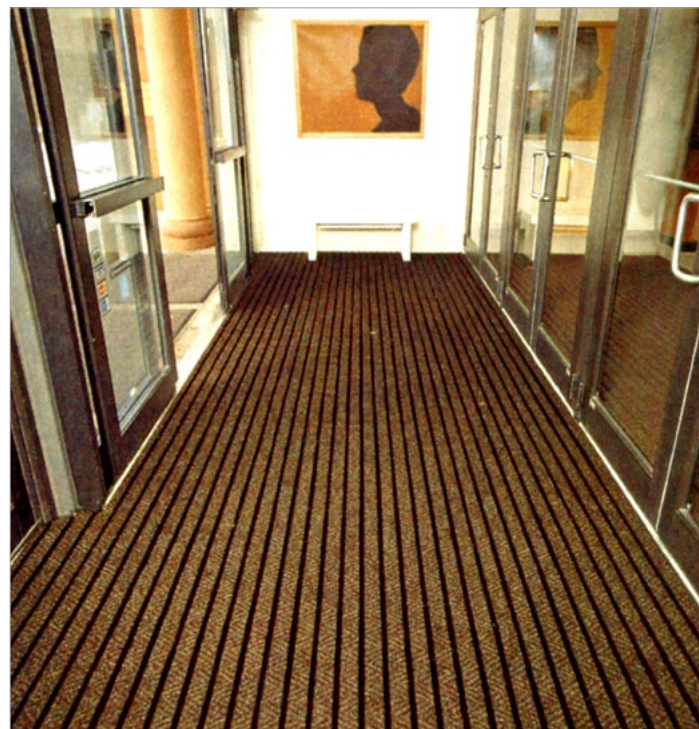
The mat can be rolled up periodically for removing the dirt underneath.





#### Product Construction & Features

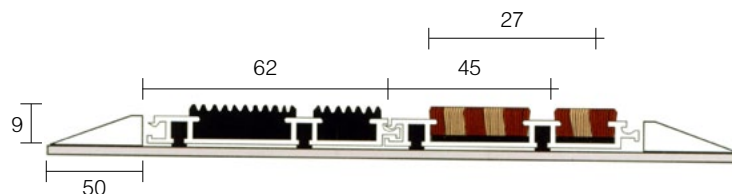
- Preliminary-zone C# is made of 6063-T5 aluminum alloy. (Standards: GB5237.3.2004). It is extra-thin design, the thickness is just 9mm. Interlocking design resists matting down, enables non-groove installation and long-lasting product life. Noiseproof rubber prevents accidents. Cleaning is easy.
- Remove and install immediately lead to easy cleaning and maintenance. Combining coarse fiber wipers with durable rubber scrape dust, dirt and moisture from shoes, maintain clean appearance.
- Durable rubbers are moistureproof, noiseproof, slip-resistant, heat-resistant, cold-resistant, anti-corrosive and anti-static.
- Available for hotels, restaurants, hospitals, commercial complexes, airdromes, ports, supermarkets, banks and other high-traffic areas.



#### APPLICATIONS:

Heavy traffic entrances: Foyers/recessed wells, retail, shopping malls, schools, hospitals, airports, and office buildings.

Resists extremely well to traffic, including trolley cart and forklift traffic.  
Traps perfectly fine and coarse dirt  
Absorbs incoming water  
Keeps a superior appearance under any conditions



#### APPLICATIONS:

Heavy traffic entrances and flooring applications: Retail, shopping malls, schools, hospitals, airports, and office buildings.

#### AE-372



100%PP yarn stripe design, absorb water, scrape dust and debris effectively. Good resiliency, durable. Stripe pattern have large space to collect dirt. The backing is slip-resistant, resist mat down and prevent cracking in any condition. Keep the floor clean, reduce times of maintenance. Prevent slipping.

#### Product info:

- Individual size: 2m x 20m, 2m x 25m
- Berber design carpet surface
- Available in a wide variety of colors

**Thickness:** 6mm



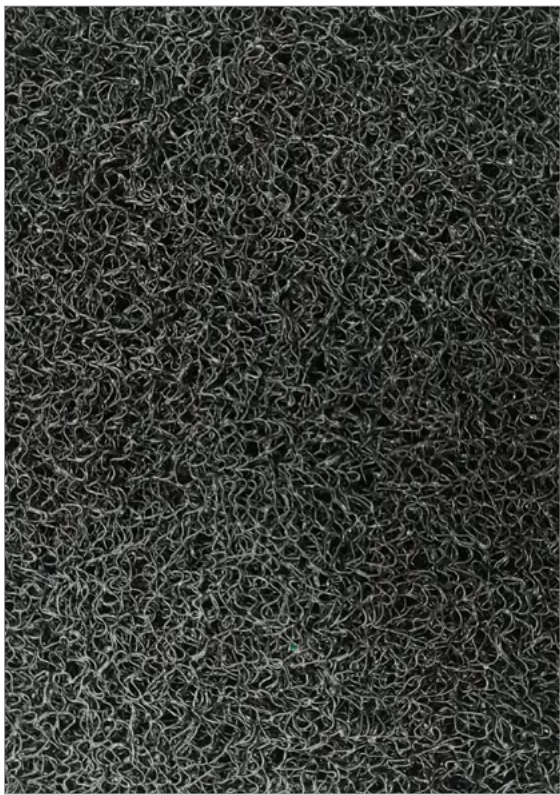
Contains granulates for maximum slip resistance  
Cleans off the worst dirt before it can get inside  
Ideal for exterior and interior entrances

Want to know the secret to keeping your interior clean even when it looks like a hopeless cause? Don't start inside, start outside—by scraping off the largest soil particles before your visitors even cross the threshold.  
AE-8A is a versatile, non-woven clean-off barrier mat for outdoor and indoor use that comes in medium-duty (MD) and heavy-duty (HD) formats. Standard

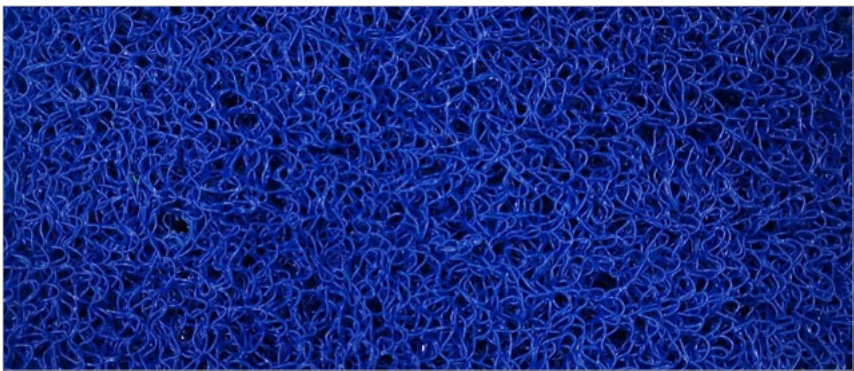
AE-8A has an open, non-backed, pervious structure, though it can also be manufactured with an Everfort vinyl backing to make it impervious. And when the going is really tough, there's Coral Grip HD, whose patented embossed design and durable, pliable vinyl filaments ensure a highly effective dirt-scraping action.



Size:	1200cm × 120cm
Weight:	4.2kg/m²
Thickness:	16.5mm



Black



Blue



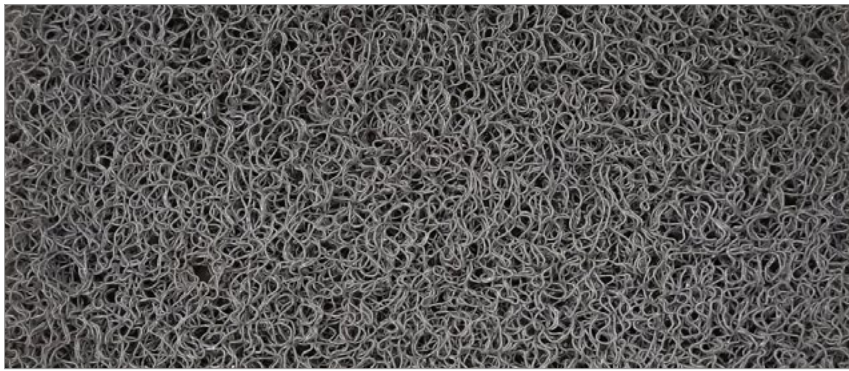
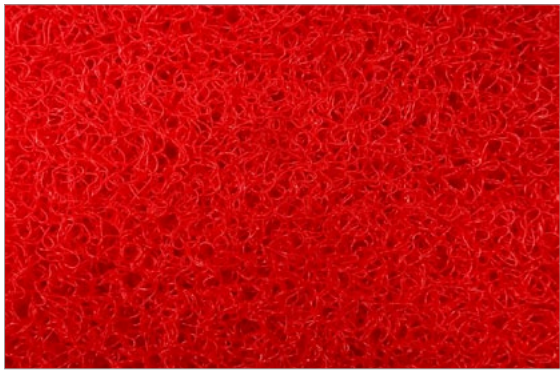
Red



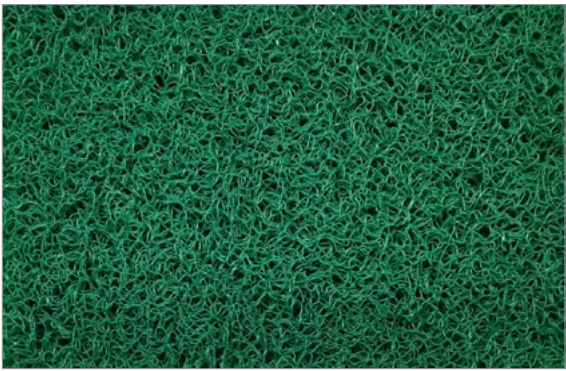
Yellow



Brown



Grey



Green





#### APPLICATIONS:

Heavy traffic entrances and flooring applications: Retail, shopping malls, schools, hospitals, airports, and office buildings.



#### AE-193 LOGO MATS



Superior Impact™ logo matting is a multi-functional entrance mat that stops dirt and debris while adding aesthetic appeal and promotes your brand/message. Printed with a state-of-the-art process that injects dye deep into the carpet pile for long-lasting vibrant color that won't fade over time. The mat itself is made from a high quality carpet fiber and a heavy-duty vinyl backing that creates greater surface friction, greatly reducing mat movement.

#### Product info:

- Dye-injection process for long lasting, vibrant color
- Color palette of 22 base colors
- Anti-slip backing to minimize mat movement
- 24 ounces of cut-pile nylon yarn per square yard provides increased moisture retention

**Thickness:** 3/8"

**Face Weight:** 24 oz per sq.yd.

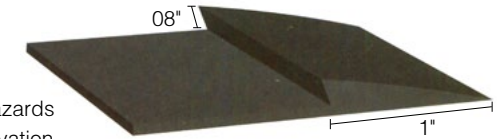
**Custom Sizes:** Available (Call Customer Service)



#### APPLICATIONS:

For on-site cut carpet matting that requires a finished look and a beveled edge to reduce trip hazards.

#### STANDARD BEVELED NOSING



Standard beveled nosing is used to eliminate trip hazards by creating a gradual elevation on the straight cut edges of carpet mats. Apply standard beveled nosing to carpet mats that are cut on-site for a factory-finished appearance.

#### Product info:

- Available in a variety of corresponding colors
- Nosing lip is adhered underneath mat and produces a 1" beveled border
- Nosing kit—including 25 feet of Nosing, 4 ounce can of adhesive and 1 application roller

**Thickness:** 1/8"

**Roll Sizes:** 150'

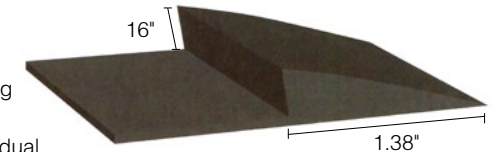
**Custom Lengths Available**



#### APPLICATIONS:

For on-site cut carpet matting that requires a finished look and a beveled edge to reduce trip hazards.

#### HEAVY DUTY BEVELED NOSING



Heavy duty beveled nosing is used to eliminate trip hazards by creating a gradual elevation on the straight cut edges of carpet mats. Apply HD beveled nosing to carpet mats that are cut on-site for a factory-finished appearance.

#### Product info:

- Nosing lip is adhered underneath mat and produces a 1 1/2" beveled border
- #039K Nosing Kit—including 25 feet of Nosing, 4 ounce can of adhesive and 1 application roller

**\*Note:** HD Nosing should be used with heavier weight mats that require a stronger than average border.

**Thickness:** 1/4"

**Roll Sizes:** 100'

**Custom Lengths Available**



#### APPLICATIONS:

For use when applying beveled nosing to unfinished ends of carpet mats.

#### VINYL ADHESIVE

Vinyl adhesive is used to attach beveled nosing to unfinished ends of custom cut carpet mats to give them a factory-finished look.

#### Product info:

- 4 or 16 ounce can
- Brush top applicator



3M™ Nomad™ Scraper Matting 6050C (Made in China)

Property	Value
Weight	2.7kg/m <sup>2</sup>
Standard Size	0.9m × 24m, 1.2m × 24m
Thickness	11.5mm

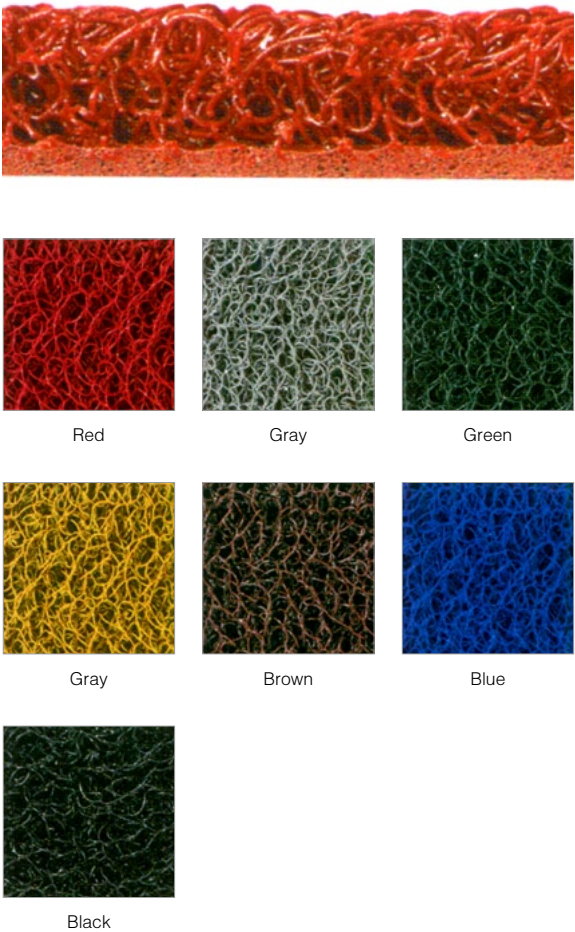
Dirt,sand and moisture are trapped and fall out of sight,keeping the matting surface clean and attractive;minimize slip and fall accident.  
Suitable for entrances,exits and low traffic area.  
No irrating amell,do not contain formaldehyde,heavy matalas and harmful chemical additives.  
Rapid drying that hinder mold growth  
Not afraid of exposure to sun and rain,do not fade easily.



3M™ Nomad™ Scraper Matting 6050(U.S.A)

Property	Value
Weight	2.3kg/m <sup>2</sup>
Standard Size	4' × 40'
Thickness	11mm

Dirt and sand are trapped and fall out of sight,keeping the matting surface clean and attractive.  
Resilient vinyl loops collect moisture,the open construction allows it to fall below the matting surface where the moisture is held to minimize slip and fall accident.  
Clean easily as simply turn the mat over shake,vacuum or rinse out trapped dirt,grime or moisture.





3M™ Nomad™ Heavy Traffic Carpet Matting 8850

Property	Value
Weight	3.5kg/m <sup>2</sup>
Standard Size	0.9m × 18m, 1.2m × 18m, 1.8m × 18m
Thickness	9.0mm

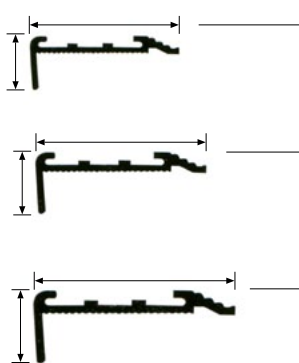
Small and latge diameter fibers combine to provide superior dirt and water removal.  
Large polypropylene fibbers provides excellent removal and hiding of dirt.  
Small nylon fibbers provide excellent removal of water  
Keeping interior floor clean and dry can minimize the danger of slip and reduce the cleaning time.  
Slip resistant vinyl backing prevents the mat from moving.



Anti-slip  
Safety Chapter

防滑安全篇





D

**Product info:**

- Made of 6063-TS aluminum alloy and PVC.
- Durable, crashproof, anti-slip, fire retardant.
- A variety of colors are available.
- Protect the stairs from damaging.
- Reduce noise.
- Easy to install.



Black

3M™ Safety-Wall™ Slip Resistant Materials

3M™ Safety-Wall™ Traction Systems



Safety Solution on Floor



Lite



General Purpose

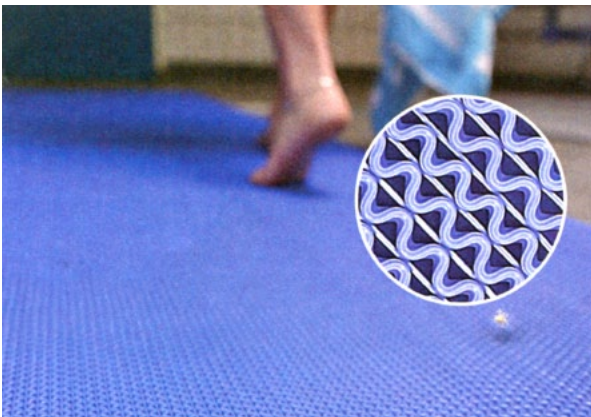


Conformable



Resilient

Type	Color	Model	Width(inches)	Length(feet)	Characteristic	Applications
Lite	Black, with luminescent strip	Lite	50mm	20m	Consists of abrasive particles laminated with a photo luminescent strip, can provide as long as 6 hours visibility in dark conditions*	Emergency passage, escape or evacuation exits, backdoor staircases of building, cinema and hotel
Coarse	Black	SW710	4, 6	30	Consists of extra-large abrasive particles which help provide a stable surface even in the presence of water or oil	Vehicles, ship and plane decks, semi-trailers, platforms and ramps
General Purpose	Black	SW610	1, 2, 4, 6, 18	60	Consists of abrasive particles bonded by a tough polymer, provides excellent slip resistance	Smooth surfaces like marble terraces, platforms, ramps and decks
	Clear	SW620	1, 2, 4			
	Yellow	SW630	2, 4			
Conformable	Black	SW510	2, 4, 6, 12	60	Consists of abrasive particles bonded by a tough durable polymer to aluminum foil, is designed to stretch and conform to irregular surfaces	Stairs and steps
	Yellow	SW530	2, 4			
Resilient	Black	SW310	1, 2, 4	60	Consists of a dimensionally stable plastic film coated with a textured resilient surface, does not damage skin	Pool sides, bathtubs, fitness rooms and wooden floors
Medium Grade	Grade	SW370	1, 2, 4, 6			
Fine Grade	Clear	SW220	1, 2, 4, 6			
	Yellow	SW280	1, 2, 4			



**APPLICATIONS:**

Indoor/Outdoor-Wet, dry or oily industrial areas, locker rooms, pool decks, commercial saunas, and shower facilities.



The wave pattern design creates a slip-resistant walking surface on wet and slippery floors. Antibacterial treated PVC material prevents the growth of fungi or bacteria while the open structure design allows for easy draining of liquids.

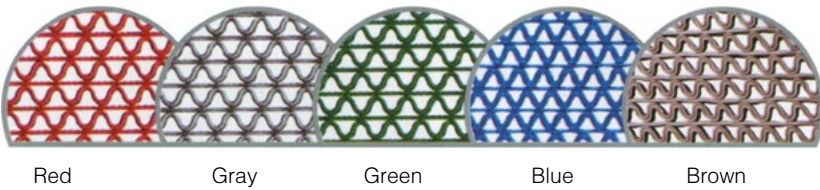
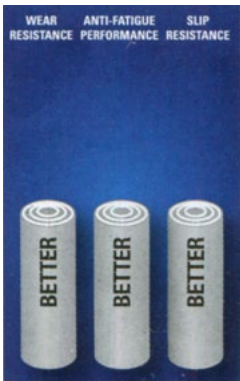
**Product info:**

- Industrial grade extruded PVC
- Oil and grease resistant
- UV resistant
- Free of DOP, DMF Silicone, Heavy metals, Ozone depleting substances

**Thickness:** 5mm

**Roll Sizes:** 3' x 40', 4' x 40'

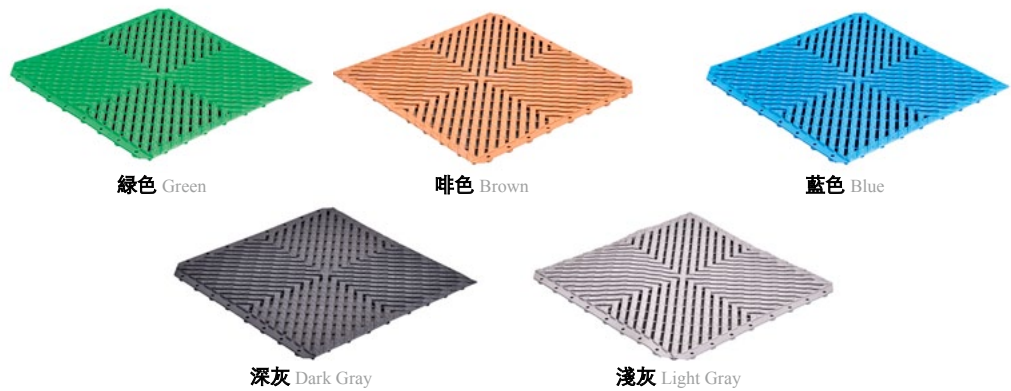
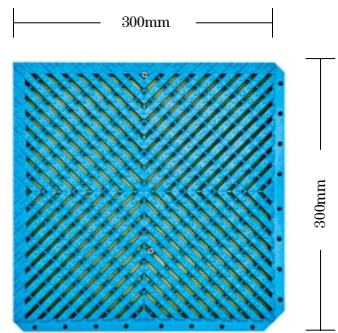
**Custom Lengths Available:** 3', 4' widths (up to 15m)



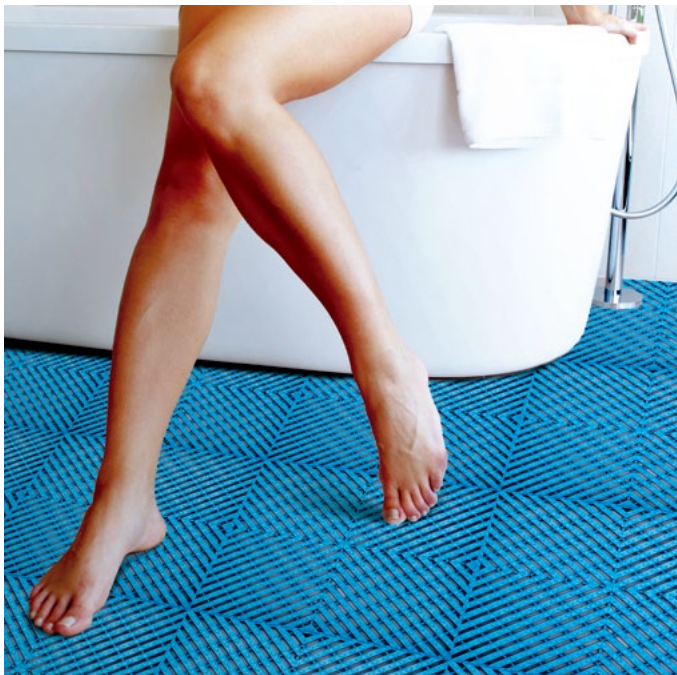


# Mega Slip-Resistant Piece Mats

Bonbon®

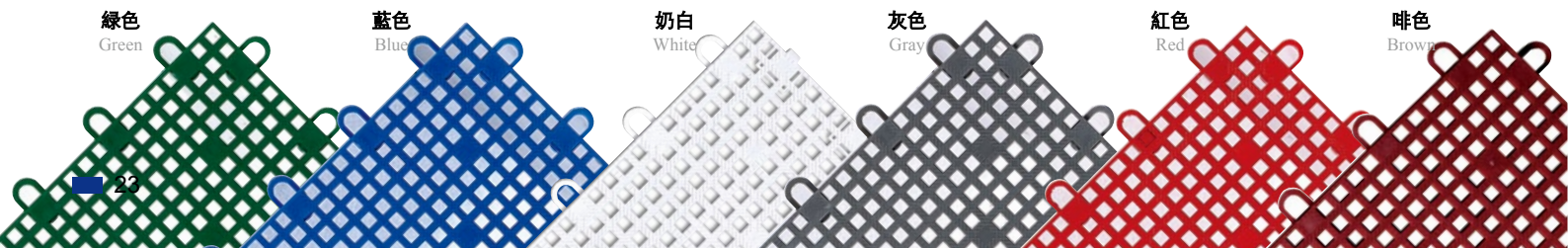
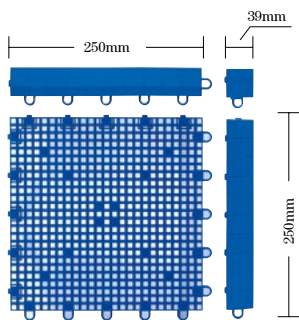


規格 Size:	300mm × 300mm
厚度 Thickness:	± 10mm
重量 / 塊 Weight/Piece:	330g
材料 Material:	EVA 合成材料



# Macy Slip-Resistant Piece Mats

規格 Size:	250mm x 250mm
厚度 Thickness:	± 13mm
重量 / 塊 Weight/Piece:	0.28kg
材料 Material:	EVA
斜膠邊寬 Border Width:	39mm



# AE-3030 Non-Slip Resistant Piece Mat

Bonbon®



Tile module mat can be used in bathrooms,pools areas,which is hydrophobic and non-slip,comfortable,can be assembled in any way and is easy in installation.

## Features

Made of PVC,withstanding acid and alkali anti-UV never fades,and heat-resistant and cold-resistant  
Holes in mat enable fast drainage.keep the floor clean,dry and safety.  
Special interlocking design makes the mat is easy to fix and remove.

## Suitable Area

Suitable for the commercial and industry floor anti-slip.  
Applicable for the dish picking-up area in dinning room, floor for the bathroom and fitting room,  
Apparently effect for the hygiene of the floor of the heavy passenger.

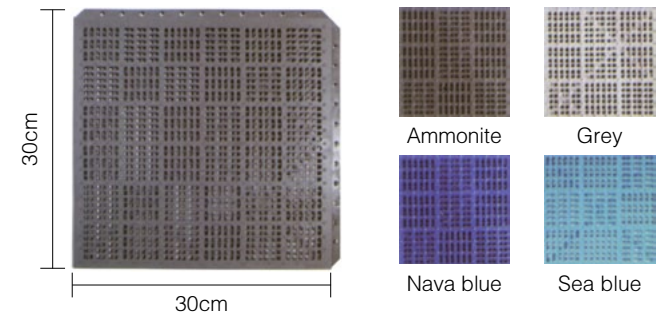
## Cleaning

Using hosing daily cleaning Scrubbing with PH7 cleaner twice a month.

## Package

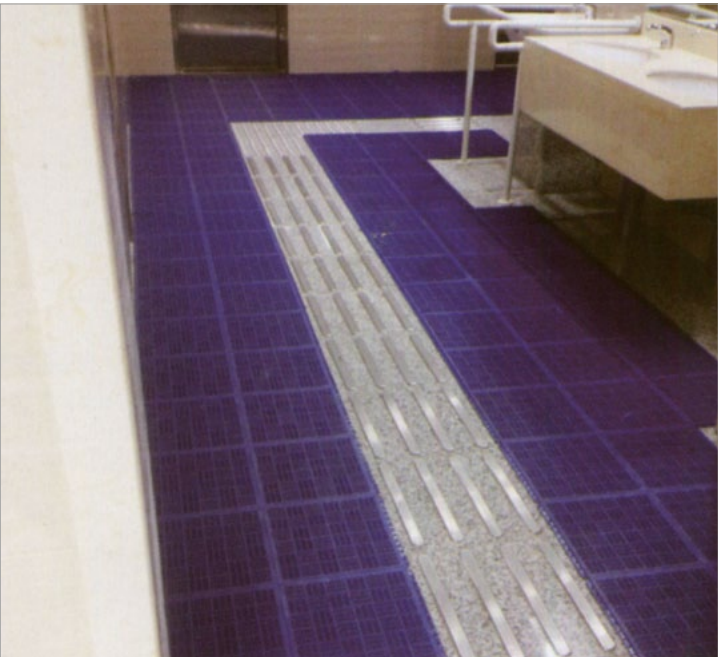
Paper box Package ,40 sheets/boxes

## Available colour



## Technical specifications

material	Medical class of soft PVC
construction	Open&Drainage Water Construction
size	30 × 30cm
general size	31 × 31cm
height	9mm
weight	380g/pcs
Environmental	GB8624-2012:B
Flamability	B <sub>1</sub> ( GB8624-2012 )





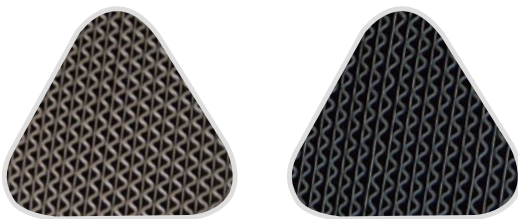
AE-8000 Non-Slip Mat (Backed)



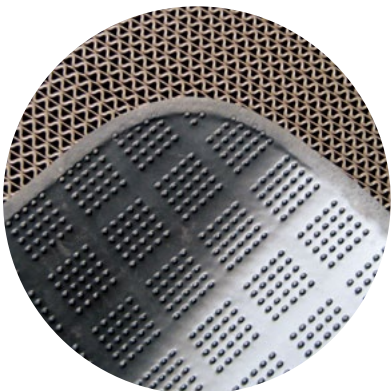
Product info:

- S-shaped pattern, absorb water and gather dust dffectively.
- Available for outdoors, entrences, workshop line, yachts, board, and other wet areas ect.
- Custom size is available, It can be logo mat.
- The S-shaped is slip-resistant, anti-bacterial, anti-UV
- Special pattern surface can glue edging.

Thickness: 5.5mm  
Stock Sizes: 3' x 40' 4' x 40'



Brown Black



PVC Non-slip backing



3M™ Scraper Matting Series

3M™ Safety-Walk™ Cushion Mat 5100

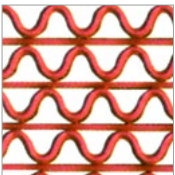
Property	Value
Weight	6.5kg/m <sup>2</sup>
Standard Size	3' x 20'
Thickness	10.5mm

Help reduce costly slips and fatigue.  
Unbacked,open constrution allows debris to pacs through mat,easy-to-clean.  
Resistant to fungal growth.  
Grease-proof,resistant to a wide variety of chemicals and detergents.

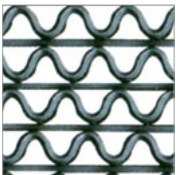


3M™ Nomad™ Scraper Matting 9100

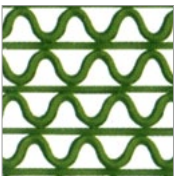
Property	Value
Weight	7.4kg/m <sup>2</sup>
Standard Size	0.9m x 12m, 1.2m x 12m
Thickness	11.4mm



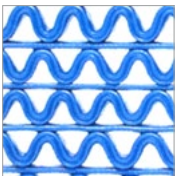
Red



Gray



Green



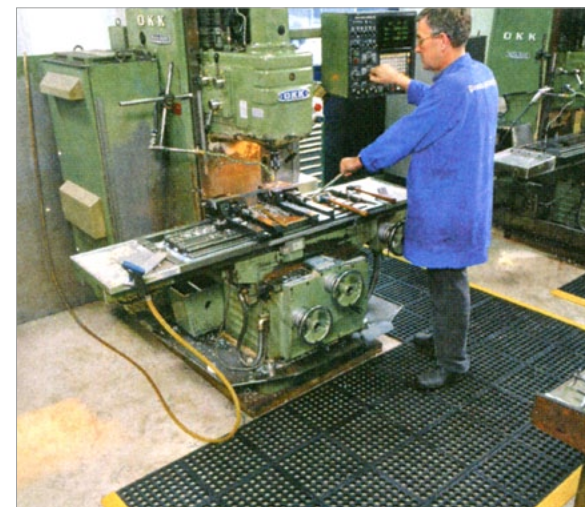
Blue





# Functional Uses

## 功能用途篇



### APPLICATIONS:

Wet environments where comfort and durability are critical yet the added requirements for GSLL or Niru versions are not needed. Where custom configurations are a consideration.

### AE-550 CUSHION-EASE (BEST)



Cushion-Ease® is a modular anti-fatigue matting system with a male/female interlocking design.

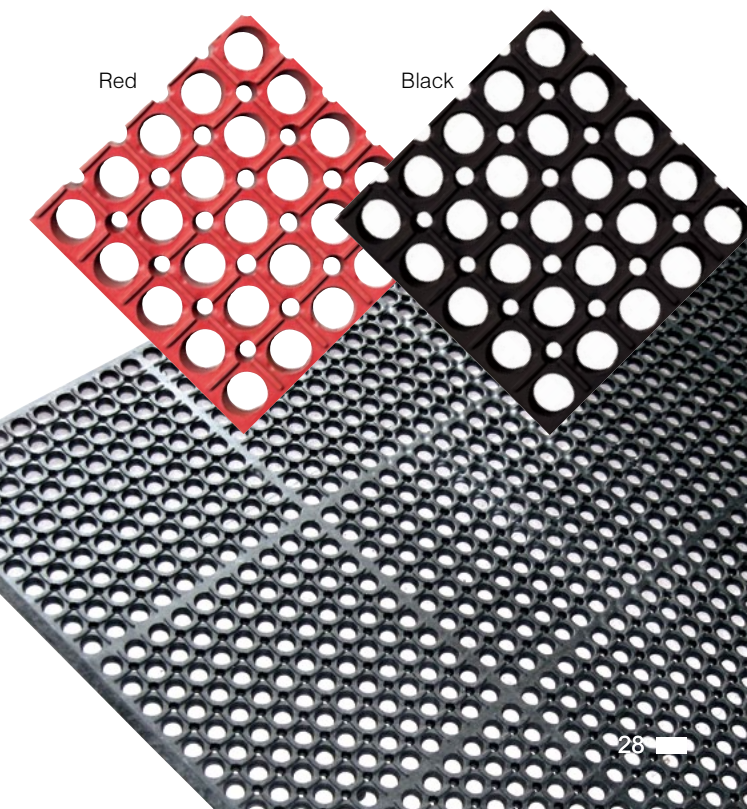
#### Product info:

- 100% NBR rubber.
- Available for kitchens, bars and industrial areas.
- Slip-resistant, anti-fatigue, waterproof, crush-resistant, cushioned and anti-grease surface enhance productivity.
- Beveled edges for safety and easy cart access.
- Non-backing construction which allows waste and liquid to pass through surface is easy to clean.
- Slip-resistant surface prevent accidents.

**Thickness:** 15mm

**Stock Sizes:** 3' x 5'

**Color:** Red, Black







**APPLICATIONS:**  
Reception counters,cashiersstations,assembly lines,workstations,packaging areas,laboratories, cooking lines,food prep stations,dishwashing stations,bar areas and service counters.

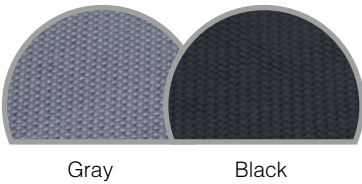
AE-440 SUPERFOAM COMFORT(BETTER) TYPE A



Superfoam Comfort takes comfort and ergonomic support to the next level. It's made from a full 3/4' thick softer PVC/ Nitrile rubber foam blend that offers greater resistance to a variety of chemicals, cutting fluids, greases, oils and fats.The high-density materials in Superfoam Comfort incorporate millions of tiny closed cells that won't absorb liquids.It's extreme comfort and lightweight make it the perfect mat for use in areas where mats are regularly moved for cleaning.



- Product info:**
- Size 150cm x 90cm
  - Material EVA+Rubber
  - Thickness 15mm ±
  - Rigidity 15° 18°



Technical specifications

The product name	A type	B type
material	Environmental rubber	
interlocking pile size	50 x 50cm/60 x 60cm/100 x 100cm	
colour	black/colourful+black	black/colourful+black
width	1.22m	1.25m
roll length	< 20m	< 20m
total weight	1020g/1mm/m <sup>2</sup>	1150g/m2/mm
height	3mm-12mm	2mm-12mm



WEIGHT ROOM MAT



This heavy-duty rubber mat absorbs the crush of free weights and exercise equipment while protecting the floor.

- Product info:**
- Rubber slab matting protects floors from extreme weight
  - Textured top surface for added traction

**\*Note:** Not intended for wall-to-wall applications

**Thickness:** 1/2"or 3/4"  
**Stock Sizes:** 4' x 6'

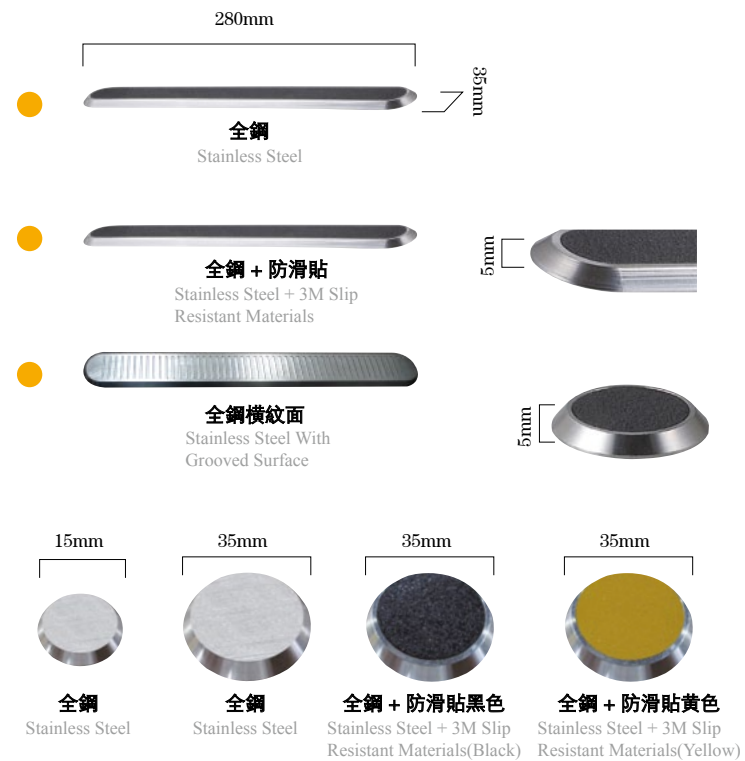


**APPLICATIONS:**  
Weight rooms, health clubs, gymnasiums. Also can be used in horse stables and trailers.



# 安全指示 (觸覺導引徑) BARRIER-FREE Road Guide Stick

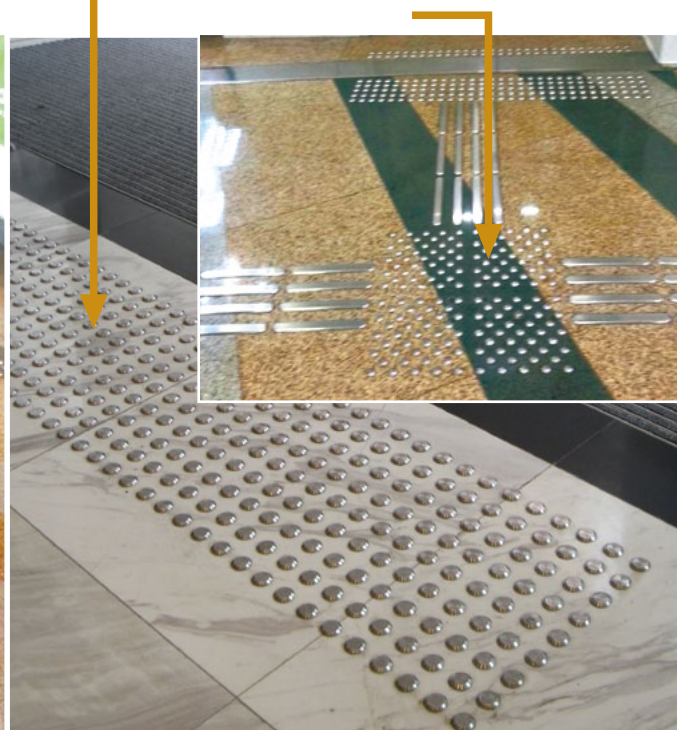
“採用 304# 不銹鋼材料生產”



定向觸覺標記  
可行走  
Directional Guide  
-Go Forward

警告觸覺標記  
需止步  
Warning Guide  
-Stop Stepping

位置觸覺標記  
需改變方向  
Turning Guide  
-Change Direction Of Steps



## Sure clean™ Urinal Mat

Bonbon®



### Product Features

- Special PP material frame with anti-mildew deodorant performance. Special strong absorbent material under the frame, is able to absorb urine timely and prevent the urine to penetrate the ground keep the ground dry.
- The special moisture-absorbing material, can lock the urine to avoid evaporation, and reduce the odor
- Special strong absorbent materials and frames are made of reusable adhesive
- Strips, they are easy to replace the materials.
- This product is laid in the men's toilet dike, used to collect drip to the urine outside the urine
- Under normal condition, a week to replace the moisture absorbing material without any cleaning and other operations.

### Urinal tablet



### Technical specifications

Frame material	PP
Frame color	Black
Absorbent material	special moisture absorbent material
Outline Size	45cm*53cm
weight	370g/pcs
Height	5mm

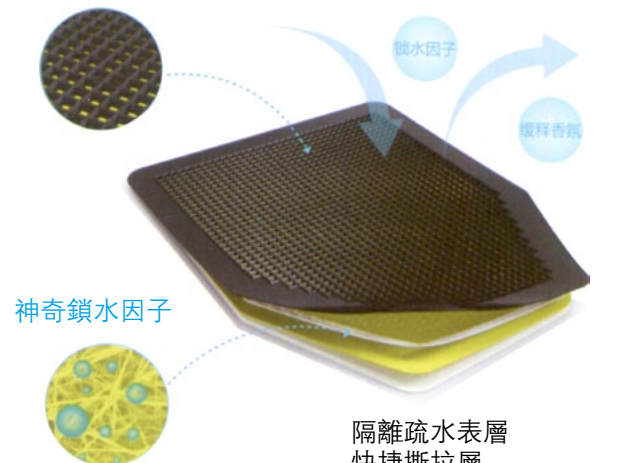
### 特點:

減輕味道

保護石材色免被尿液腐蝕

每週更換一次吸濕材料 (以 2000 人次計)

### 密集疏水孔



### 神奇鎖水因子

隔離疏水表層  
快捷撕拉層  
吸水抗菌除臭層  
防水防滑底層

### Gel tablet

30 days of continuous effective deodorant. Reduce the urinal flush, water-saving effect. Splash design, to avoid the urine splashed underwear. Using biodegradable green materials. Fragrant and diverse.

### Barrier tablet

The use of environmentally friendly PVC material manufacturing. Have a good barrier to cigarette butts and other debris effect.

### Fragrant tablet

Biological enzyme technology in addition to antibacterial taste. Direct decomposition of urine odor. Get rid of the dirt in the sewer.

### Un-splashing tablet

Un-splashing, no spilled out. Inhibit the growth of Staphylococcus aureus. Aromatic effect lasting up to 45 days or more. More suitable for high-end places to use.



# 羊毛工藝手織地毯

## Manual Wool Carpet

# Wool Carpets

## Innovation

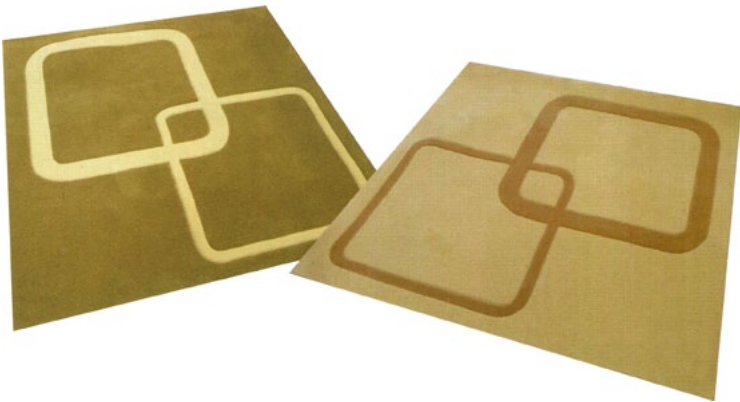
The choice of the Kennedy Art Center and many Five-star hotels is the acknowledgement of new century's concept combination of oriental and western design.



色板有數百種顏色作為參考，無論手織及機織地毯，我們都可以造出任何彩通專色系統中的色調。

## Quality

It is easy to choose the good looking carpet,but what you need more is its durability.  
 Choosing cheap carpet could save your cost for one time,but the quality carpet will bring you much more value.  
 Choosing the environmentally-friendly carpet,choosing your high quality life.



羊毛是天然的原材料，不像化工的人造機維或尼龍般耗費天然資源，無需加工處理也能自動達到安全的阻燃效果及天然的抗污功效。



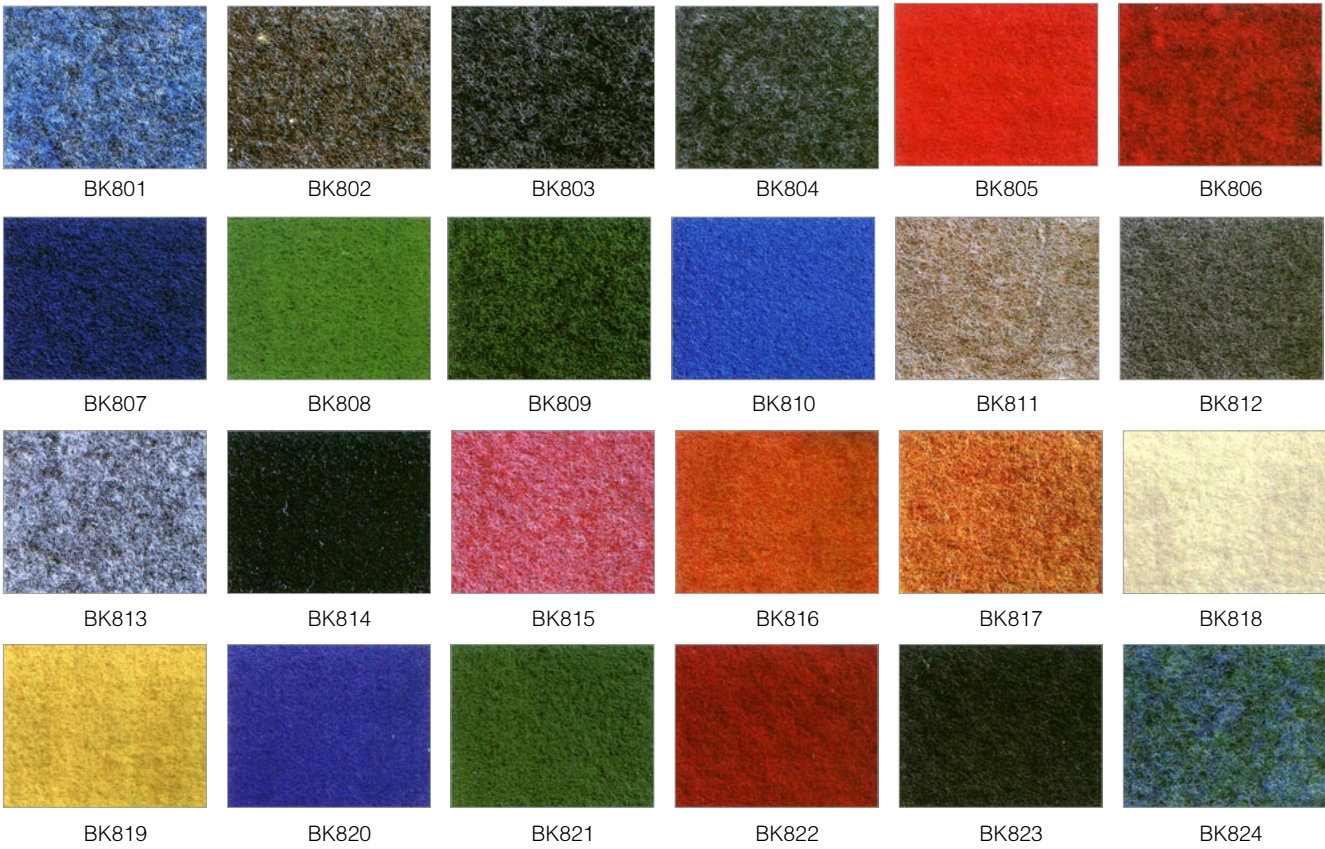
羊毛地毯無論採用于商務、住宅或酒店等環境，也足以承受高度磨損，并且能保持衛生及無過敏性反應。羊毛制品與人造機維做的地毯不同，它們甚至可吸收空氣中的有害成分，改善室內空氣質素。



**APPLICATIONS:**  
 All large,upscale entrances,reception areas: offices,hotels,professional buildings.

## ISTRA

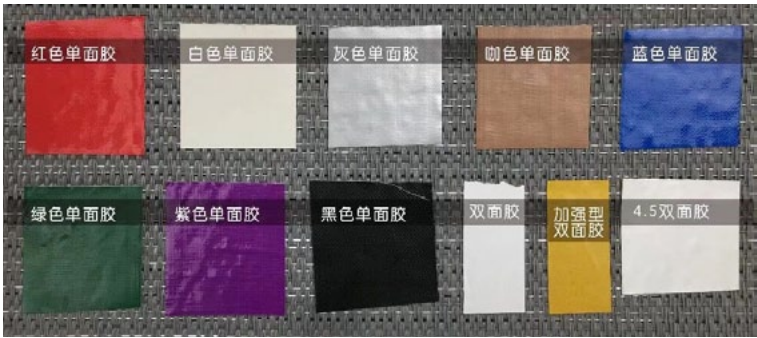
Needle Punch Carpet  
 Made In Belgium



## KK 暫用工作毯

100% polypropylene Width 6'7''(2M)  
 size:2m x 50m

## 膠紙色卡 (尺寸: 2"x12M, 3"x12M, 4"x12M)



日本 Sliontec 強力雙面膠紙  
 (尺寸: 1"x15M, 2"x15M)

